

## Etch Divide Pull

## Technical Specifications



## Product Details

---

**Dimensions (mm)**

95 L x 40 W 10 Dia

---

**Material**

Solid Brass

---

**Finishes**

Brushed Brass  
Aged Brass  
Blackened Brass

All finishes are sealed with a clear satin lacquer unless specified otherwise.

---

**Mounting Hardware Included**

Yes

---

**Screw / Bolt Type**

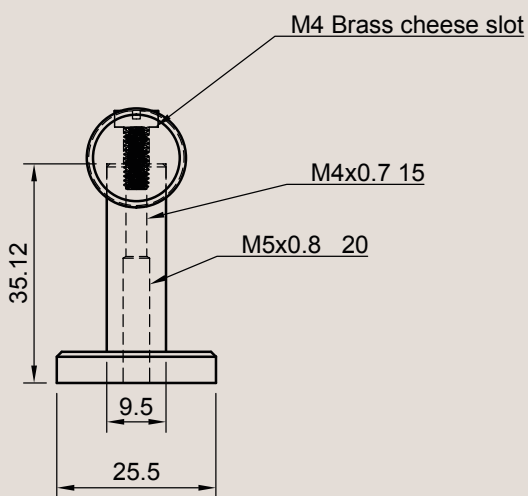
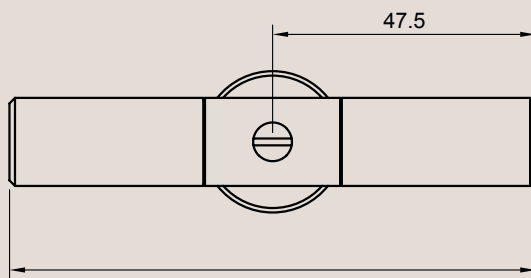
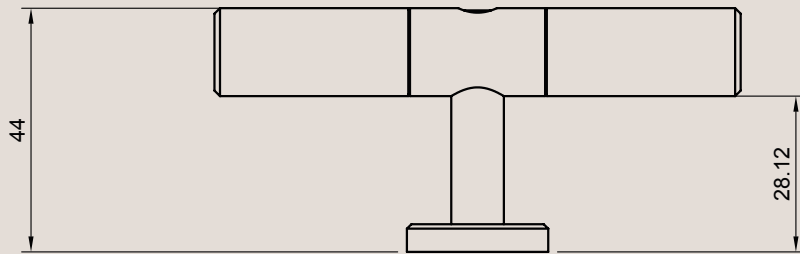
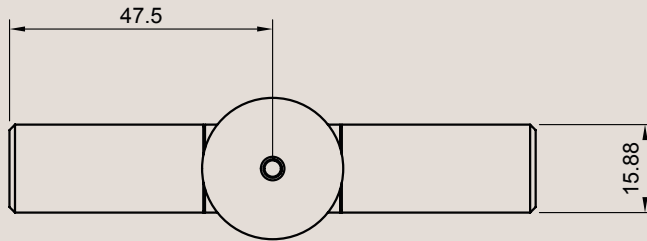
M5

---

**Mounts From**

Back

## Dimensions Guide



## Etch Divide Pull

---

## Technical Specifications

---

### Product Care

- Regular gentle care and maintenance will preserve and extend the life of your product.
- We suggest cleaning weekly, remove dust with a dry soft microfibre cloth, a damp microfibre cloth may be also be used for tougher areas.
- We recommend only using water. Avoid using cleaning products, oils, and other polishes as they may cause permanent damage.
- We recommend wearing gloves when installing and cleaning your products.
- Do not leave moisture, cleaning products, or solutions on the surface of our products as they may erode the lacquer.